

ELYSIUM

HOTEL INFORMATION

Discover the Elysium

The Elysium: a heavenly haven, a place of delight and eternal bliss, where unique experiences serve to impress you again and again.

The hotel has been constructed in an area assuredly revered in ancient times as a significant location, proof of which being the Tombs of the Kings-one of the island's most significant archaeological sites-lying adjacent to the property's grounds. And no wonder this area was imbued with value then, as it still is now, for the view of the setting sun over the horizon is simply spectacular.

With a palatial design, the Elysium invites you to enjoy unforgettable moments in an environment of ultimate serenity, complete with uninterrupted views of the sea.

Surrounded by extensive landscaped gardens embellished with water features, multi-level pools, an amphitheatre, and its own sandy cove, the hotel inspires a feeling of wellbeing and indulgence. Every design detail is an example of artistic and insightful craftsmanship, with stone, marble, and timber features having been incorporated into the décor, evoking the island's history and heritage. Indeed, the moment the Elysium comes into view, guests are confronted with its sturdy drawbridge and imposing medieval arch, leading through to the inspiring colonnaded reception area. Images of the past can't help but come to mind, from the days of Byzantine prosperity, to times of Roman, Medieval and Venetian glory.

A tour of the hotel is a journey of exploration: take in the warmth of the muted earth colours, and allow yourself to marvel at the intricate mosaics, and impressive arches and columns.

LOCATION

The Elysium is situated on the beach in the historical heartland of the ancient city of Paphos, next to the historical site of the Tombs of the Kings. It is only a 10 minute drive from the picturesque harbour of Paphos, 25 minutes from Paphos International Airport and 90 minutes from Larnaca International Airport.

ADDRESS

PHYSICAL ADDRESS:

6, Queen Verenikis Street 8045 Paphos, Cyprus

POSTAL ADDRESS:

6, Queen Verenikis Street P.O.Box 60701, 8107

Paphos, Cyprus

T: +357 26 844 444, Fax +357 26 84 4333

E-MAIL: info@elysium.com.cy

www.elysium-hotel.com

OFFICIAL CLASSIFICATION

5 Star Deluxe

USEFUL INFORMATION

VOLTAGE: 240 Volts

GUEST ELEVATORS: 4

FLOORS: 4

CREDIT CARDS: All major cards are accepted

ROOM SERVICE: 24 hours

Wireless Internet access (with the hotel's compliments)

RECEPTION: 24hrs service including 24hrs telephone access

TAXI TRANSFER SERVICE: To and from airports

PARKING SPACE: Free of charge

EXPRESS SERVICE: Check in and check out

THE GARDENS

Visit the hotel's grounds, and be inspired by the landscaped gardens, with direct access to the Tombs of the Kings. Scents of jasmine and citrus fill the air, as do the aromas of the olive trees and array of flowers. Settle for a moment in the outdoor amphitheatre and behold the marvellous sunset. Thereafter, follow the lavender-lined path down to the sea. Along the way, stop by the sparkling multi-level swimming pools. Having reached the beach, venture down the pedestrian path adjacent to the shoreline, which leads all the way down to Paphos harbour.

ELYSIUM HOTEL PAPHOS

6, Queen Verenikis Str, 8045 Paphos, Cyprus. T: +357 2684 4444

elysium-hotel.com

ELYSIUM

HOTEL INFORMATION

Accommodation

The Elysium encompasses 287 rooms and suites designed to cater to couples, families, and business travellers. Each room type differs in space and spirit, and comes complete with a variety of amenities to suit the wants and needs of all manner of traveller.

The maximum occupancy indicated below can be achieved via a combination of adults and children (except if indicated that the room or suite is reserved exclusively for adults). Moreover, one extra child's bed and cot, or three single children's beds can be provided in the Elysium Suites to accommodate a maximum number of 5 persons. Baby cots are not over and above the maximum capacities indicated for each accommodation type. To determine the most suitable room type in keeping with your needs, please contact our Reservations Department.

BREAKDOWN OF ACCOMMODATION

250 Rooms and Suites TYPE OF ACCOMMODATION	SIZE	ADULTS		CHILDREN		TOTAL	
		MIN	MAX	MIN	MAX	MIN	MAX
Deluxe Room	34 m ²	1	3	1	2	1	3
Deluxe Partial Sea View Room	34 m ²	1	3	1	2	1	3
Deluxe Sea View Room	34 m ²	1	3	1	2	1	3
Family Duplex Suite	53 m ²	1	2	1	3	1	4
Family Duplex Suite on Royal Garden	53 m ²	1	2	1	3	1	4
Studio Suite (Adults Only over 16 y.o.)	40 m ²	1	2	0	0	1	2
Studio Suite, Private Pool (Adults Only over 16 y.o.)	40 m ²	1	2	0	0	1	2
Garden Villa Suite, Private Pool	60 m ²	1	2	1	3	1	4
Deluxe Sea View Suite	68 m ²	1	2	1	3	2	4
Deluxe Sea View 2 Bedroom Suite	102 m ²	2	4	1	3	2	6
The Artemis Junior Suite (Adults Only over 16 y.o.)	66 m ²	1	2	0	0	1	2
The Thalia Suite (Adults Only over 16 y.o.)	67 m ²	1	2	0	0	1	2
The Queen Verenikis Suite (Adults Only over 16 y.o.)	86 m ²	1	2	0	0	1	2
The Royal Suite, Sea View, Private Pool (One Bedroom)	128 m ²	1	2	0	0	1	2
The Royal Suite, Sea View, Private Pool (Two Bedroom)	162 m ²	2	5	1	3	2	5

ELYSIUM HOTEL PAPHOS

6, Queen Verenikis Str, 8045 Paphos, Cyprus. T: +357 2684 4444

elysium-hotel.com

E L Y S I U M

ACCOMMODATION

Deluxe Room

Infused with sophisticated romanticism, our Deluxe Rooms are the epitome of luxury: inviting, inspiring, and individual.

Both hard and soft furnishings have been carefully crafted to lead guests on a journey through Cyprus' rich history, with warm woods, marble accents, and seamless glass outlines coming together in the creation of bright elegance.

Colour embellishments have been chosen to reflect the island's awe-inspiring sunset: intoxicating crimson, pastel peach, and gentle gold tones artfully unite, recreating the brilliant beauty of the landscape within the serene confines of the room.

Boasting an eclectic fusion of furnishings – at once both faraway and familiar, marrying timeless flair with technological advancements – ease and comfort lie at the heart of our guests' experience.

Travelling families may obtain connected units, ensuring the luxury of space and privacy.

IN-ROOM SERVICES AND AMENITIES

ROOM FEATURES

- Room size: 34 m2 (excluding balcony)
- Choice of inland view, partial sea view, and sea view
- Located on floors 1-4
- Maximum occupancy: 3 persons
- Private balcony
- Marble or carpet flooring
- Sitting area with spacious dual desk and vanity station
- Direct dial telephone with voicemail (3 devices)
- Double glazed windows
- Safety deposit box
- Espresso machine (replenished daily)
- Fully stocked mini bar (extra charge)
- Tea and coffee making facilities (replenished daily)
- Bedside reading lights
- Automated in-room lighting, including mood lighting and night light
- Plugs with USB ports
- Double wardrobe with lit hanging rail
- Hairdryer
- Electronic "Do not disturb" function

BED AND BATH

- Bed type: King-sized bed or twin beds
- Pillow menu available
- Lighted make-up and shaving mirror
- Marble en-suite bathroom with bathtub, hand shower, WC, bidet and personal storage space
- ESPA toiletries
- Thick terry bathrobes, and slippers

ENTERTAINMENT

- Smart TV 50" with satellite channels supporting Netflix service subject to client's subscription (TV can be paired with android smartphones and tablets)
- Room-wide TV volume control panels
- Audio cable connection

INTERNET ACCESS

- Wireless Internet access (with compliments)

SERVICES AND AMENITIES

- Daily housekeeping service
- Daily Turning Down service (Night Service)
- Airport transfers and limousine service (on request)
- Babysitting service (on request)
- Currency exchange service
- 24-hour room service
- Multilingual concierge
- Valet parking
- Complimentary access to PressReader application (International newspapers and magazines)
- Laundry, dry cleaning and pressing

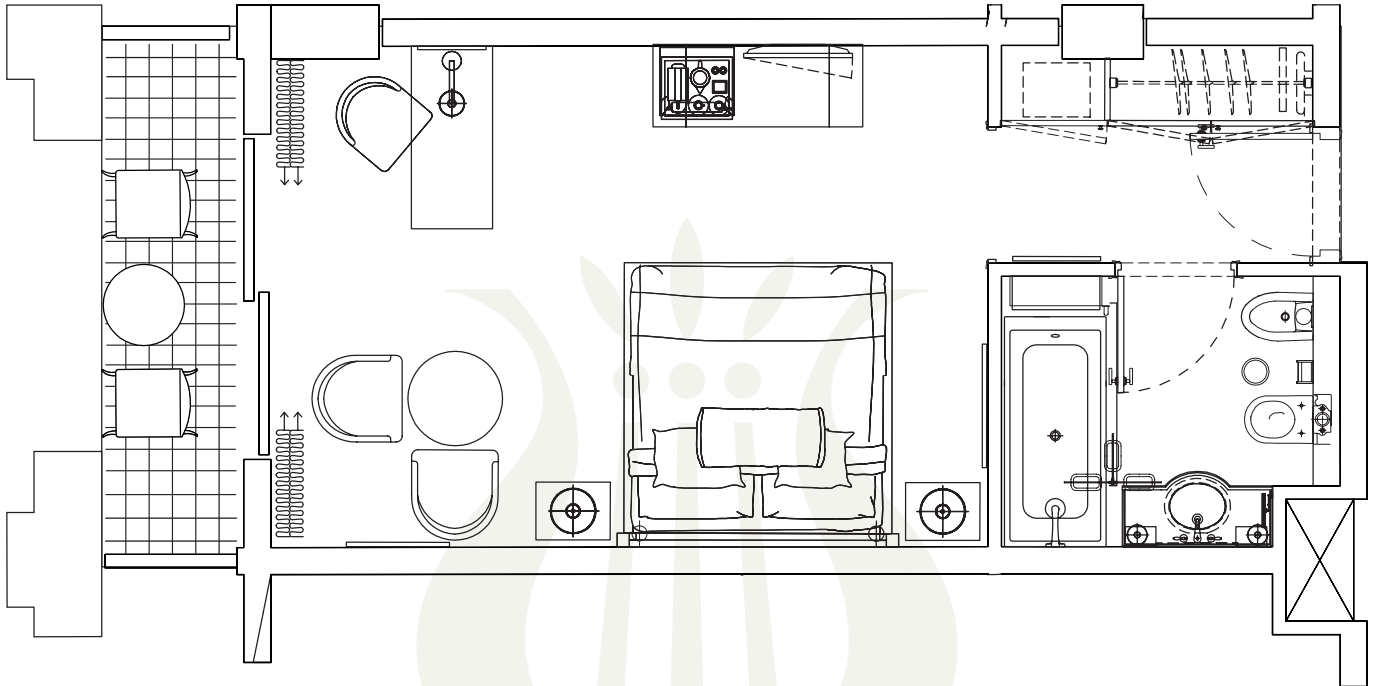
GUEST COURTESIES

- Cold towel upon check-in
- Complimentary welcome drink upon arrival
- Sweets display and mineral water upon arrival

ELYSIUM

FLOORPLAN

Deluxe Room



E L Y S I U M

ACCOMMODATION

Family Duplex Suite

Captivating in their simple charm and warm ambiance, our newly renovated Family Duplex Suites possess a sincere hospitality that makes for a true home away from home. A cozy cottage vibe permeates throughout, thanks to the bronze and wood details and local stone cladding that feature prominently in all aspects of the Suite. A wooden staircase leads to a galleried mezzanine bedroom with a Mediterranean-inspired color scheme of natural tones that exudes an aura of relaxation and calm. Soft lighting and wooden paneling ensures that both privacy-seeking couples and families alike will delight in this genial space.

Guests are greeted by a living area that evokes a sense of comfort, embellished by wooden bookshelves and unique art pieces by local artists. An impressive double-height ceiling provides effortless grandeur and the excitement of a lavish getaway in a space that is as comforting as it is grand.

IN-ROOM SERVICES AND AMENITIES

ROOM FEATURES

- Room size: 53 m² (excluding balcony)
- Located on the ground floor
- Patio Garden, or Royal Garden views
- Maximum occupancy: 2 adults and 2 children
- Spacious living room
- Marble and parquet flooring
- Direct dial telephone with voicemail (3 devices)
- Double glazed windows
- Coffee and tea making facilities (replenished daily)
- Espresso machine (replenished daily)
- Bedside reading lights
- Automated in-room lighting including mood lighting and night light
- Plugs with USB ports
- Electronic "Do not disturb" function
- Fully stocked mini bar (extra charge)
- Safety deposit box
- Hairdryer
- Electrically operated curtains

BED AND BATH

- Mezzanine sleeping gallery with European King bed
- Ground floor : Sofa bed and a day bed
- Pillow menu available
- WC and walk-in shower on the ground level
- WC and walk-in shower on the upper level
- ESPA toiletries
- Lighted make-up and shaving mirror
- Thick terry bathrobes, and slippers
- Loofah

Double French patio doors framed by a classic half-moon window brings an abundance of natural light to the space. A spacious bathroom with mosaic-tiled walls and brushed platinum color finishes, as well as a large walk-in shower completes the downstairs area.

The galleried mezzanine bedroom features a sumptuous Queen-sized bed, en-suite shower, and illuminated wardrobe. Soft, discreet lighting and ethereal sheer curtains that can be drawn to facilitate privacy add to the sense of romance that is inherent in the mellow grace of the Duplex.

Guests may choose between a duplex with hedge-encompassed patios that are ideal as a safe space for children to play, or a patio overlooking the hotel's exquisite Royal Gardens.

ENTERTAINMENT

- Smart TV 50" with satellite channels (2 units) supporting Netflix service subject to client's subscription (TV can be paired with android smartphones and tablets)

INTERNET ACCESS

- Wireless Internet access (with compliments)

SERVICES AND AMENITIES

- Daily housekeeping service
- Daily Turning Down service (Night Service)
- Airport transfers and limousine service (on request)
- Babysitting service (on request)
- Currency exchange service
- 24-hour room service
- Multilingual concierge
- Valet parking
- Complimentary access to PressReader application (International newspapers and magazines)
- Laundry, dry cleaning and pressing

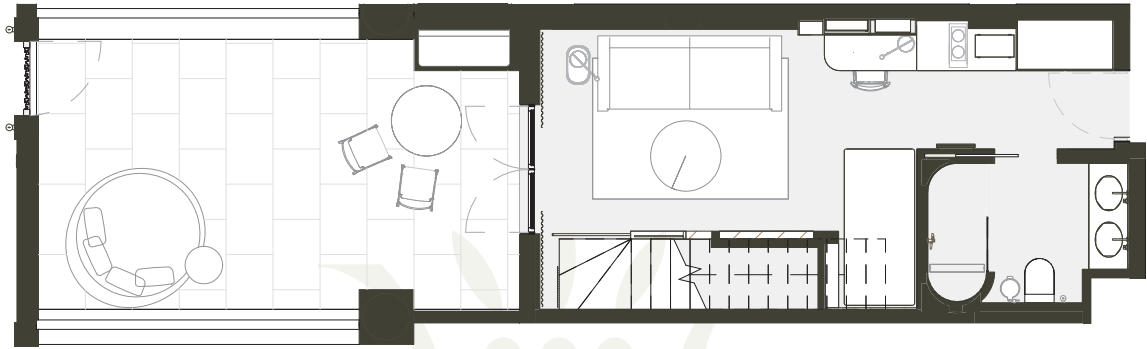
GUEST COURTESIES

- Cold towel upon check-in
- Complimentary welcome drink upon arrival
- Sweets display and mineral water upon arrival

E L Y S I U M

FLOORPLAN

Family Duplex Suite



lower level



upper level

E L Y S I U M

ACCOMMODATION

Deluxe Sea View Suite

ONE OR TWO BEDROOMS

Uniting functionality with a fashionable feel, our multi-purpose, Deluxe Sea view Suites comprising one artfully appointed bedroom, one spacious living room, and an expansive balcony – are uniquely positioned to deliver an exclusive holiday experience.

Adorned with maroon and apricot tones against a calming pearl backdrop, the new millwork, and painted wood panelled ceiling – in soft grey and dark walnut hues – lend a grandeur to the space befitting a five-star residence.

IN-ROOM SERVICES AND AMENITIES

ROOM FEATURES

- Room size
 - One bedroom: 68 m² (excluding balcony)
 - Two bedrooms: 102 m² (excluding balcony)
- Views of the sea
- Located on floors 3 and 4
- Maximum occupancy (one bedroom): 4 persons
- Maximum occupancy (two bedrooms): 6 persons
- Dual desk and vanity station
- Spacious living room
- Private balcony
- Carpet flooring
- Direct dial telephone with voicemail (3 devices)
- Double glazed windows
- Safety deposit box
- Fully stocked mini bar (extra charge)
- Espresso machine (replenished daily)
- Tea and coffee making facilities (replenished daily)
- Bedside reading lights
- Automated in-room lighting, including mood lighting and night light
- Plugs with USB ports
- Double wardrobe with lit hanging rail
- Hairdryer
- Electronic "Do not disturb" function
- Electrically operated curtains

BED AND BATH

- Bed type: King-sized bed or twin beds
- Pillow menu available
- Lighted make-up and shaving mirror
- Marble en-suite bathroom with bathtub, hand shower, WC, bidet and personal storage space
- Shaver power supply
- ESPA toiletries
- Thick terry bathrobes, and slippers

An inviting double bed, dual desk and vanity station, and smart TV complete the bedroom space, alongside an elegant en-suite bathroom enhanced with a double sink, rustic stone finishes, and French doors with frosted glass panels.

Appointed with casual yet classic furnishings, a sectional sofa with pull-out bed stands at the centre of the living room area, which also features a second smart TV, and separate powder room with shower.

Highlighting the island's impressive landscape, all suites have full sea views. An adjoining room may be reserved, resulting in an expansive two-bedroom suite.

ENTERTAINMENT

- Smart TV 50" with satellite channels (2 units) supporting Netflix service subject to client's subscription (TV can be paired with android smartphones and tablets)

INTERNET ACCESS

- Wireless Internet access (with compliments)

SERVICES AND AMENITIES

- Private check-in
- Daily housekeeping service
- Daily Turning Down service (Night Service)
- Airport transfers and limousine service (on request)
- Babysitting service (on request)
- Currency exchange service
- 24-hour room service
- Multilingual concierge
- Valet parking
- Complimentary access to PressReader application (International newspapers and magazines)
- Laundry, dry cleaning and pressing
- Exclusive access to adults only Sunken Royal Pool (available to guests 16 years and older)

GUEST COURTESIES

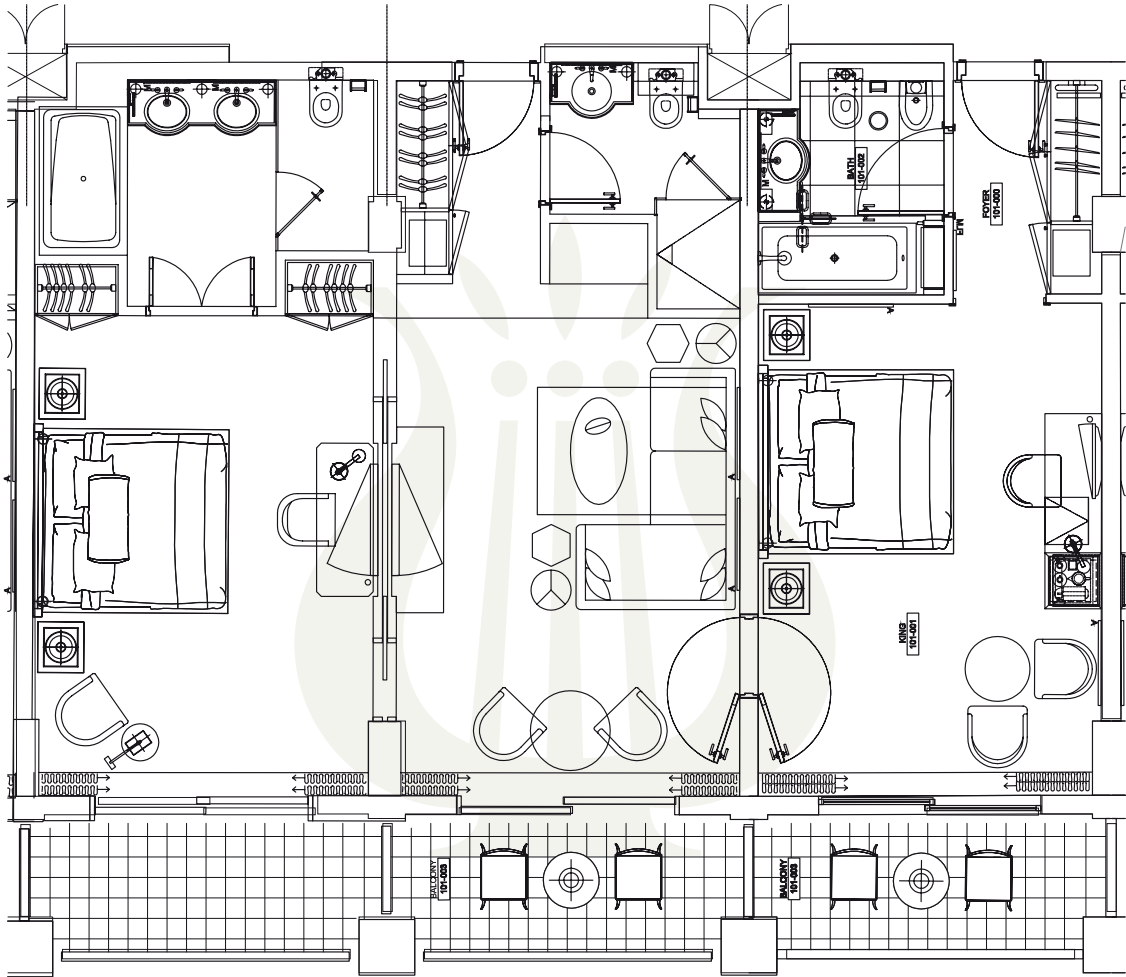
- Cold towel upon check-in
- Complimentary welcome drink upon arrival
- Sweets display, mineral water, bottle of house wine and pralines upon arrival
- Fresh fruit display replenished daily
- Bottle of almond liqueur
- Daily sweets courtesy

E L Y S I U M

FLOORPLAN

Deluxe Sea view Suite

ONE OR TWO BEDROOMS



E L Y S I U M

ACCOMMODATION

Studio Suite

The Elysium's newly renovated 12 adults-only Studio Suites are housed in the hotel's colonnaded megaron; a stately structure named for the great hall adorning palace complexes in ancient Greece.

The Studio Suites exude warmth and comfort, with cool tiled floors complemented by natural stone and wood paneling, and bronze and wood details throughout. Muted tones and smooth curves are enhanced by unique art pieces by local artists to create an aura of complete calm.

Further to the sumptuous European King bed and vanity area with large mirror, each room comes complete with a comfortable seating area. A marble-topped and brushed oak coffee table adds a luxurious touch.

IN-ROOM SERVICES AND AMENITIES

ROOM FEATURES

- Room size: 40 m2 (excluding balcony)
- Located in the Megaron
- Accommodates up to 2 adults (over 16 years old)
- Upper level rooms feature a balcony with view of gardens; ground floor units feature terrace with private plunge pool, umbrella and two sun beds
- Fully stocked mini bar (extra charge)
- Espresso machine (replenished daily)
- Coffee and tea making facilities (replenished daily)
- Direct dial telephone with voicemail (2 devices)
- Hairdryer
- Bedside reading lights
- Automated in-room lighting including mood lighting and night light
- Plugs with USB ports
- Electronic "Do not disturb" function
- Dressing table
- Marble flooring
- Safety deposit box
- Electrically operated curtains

BED AND BATH

- Bed type: European King bed
- Pillow menu available
- Lighted make-up and shaving mirror
- Walk-in shower and WC
- ESPA toiletries

The en-suite bathroom features an impressively large double shower with glass doors, and his-and-hers sinks with illuminated double mirrors.

Whilst the upper level studios each features a private balcony, perfect for star gazing by night, and breathing in the fragrance of the lemon and orange trees lining the gardens below – the ground floor studios are enhanced by an exclusive hedge-encircled garden with private plunge pool: an exultation of the joie de vivre.

Ideal for couples seeking an exquisite and inviting space from which to explore the island, guests of our Studio Suites are also afforded the luxury of availing themselves of the hotel's dedicated adults-only swimming pool, privately set aside from the main building in a sunken courtyard.

ENTERTAINMENT

- Smart TV 50" with satellite channels (2 units) supporting Netflix service subject to client's subscription (TV can be paired with android smartphones and tablets)

INTERNET ACCESS

- Wireless Internet access (with compliments)

SERVICES AND AMENITIES

- Private check-in
- Daily housekeeping service
- Daily Turning Down service (Night Service)
- Airport transfers and limousine service (on request)
- Babysitting service (on request)
- Currency exchange service
- 24-hour room service
- Multilingual concierge
- Valet parking
- Complimentary access to PressReader application (International newspapers and magazines)
- Laundry, dry cleaning and pressing
- Exclusive access to adults only Sunken Royal Pool (available to guests 16 years and older)

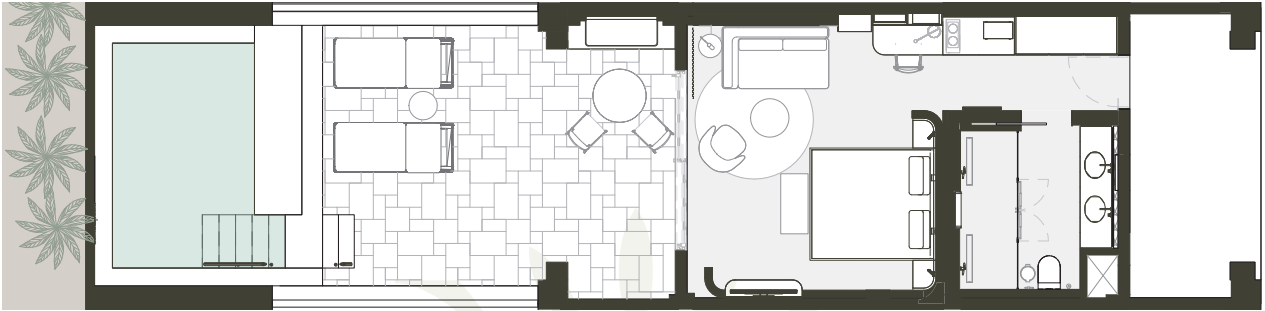
GUEST COURTESIES

- Cold towel upon check-in
- Complimentary welcome drink upon arrival
- Sweets display, mineral water, bottle of house wine and pralines upon arrival
- Fresh fruit display replenished daily
- Bottle of almond liqueur
- Daily sweets courtesy

ELYSIUM

FLOORPLAN

Studio Suite



E L Y S I U M

ACCOMMODATION

Garden Villa Suite, Private Pool

Stepping into your spacious villa – an exclusive holiday haven – expansive French doors meet your gaze, topped with a half-moon window and framed by a double-height stone wall and sheer curtains.

Recently renovated and filled with an abundance of natural light, the room exudes a sense of warmth and comfort, while traditional elements abound – from the herringbone wood texture flooring to the whitewashed wooden beams on the ceiling and arched niches. Soft, muted tones are complemented by unique art pieces – ceramic sculptures and woven textile wall hangings by local artists, and bronze and platinum details throughout.

The living space features a large sofa and chaise longue, chic armchair, and marble-topped coffee tables and woven area rug. Ascending the wooden staircase to the romantic, overhanging galleried mezzanine sleeping area, guests are greeted by a sumptuous King-sized bed, and a bright, marble en-suite bathroom with freestanding bathtub and walk-in shower.

Of course, should you desire even more privacy and exclusivity, each Garden Villa Suite is enhanced by its own patio garden, complete with plunge pool, two comfortable, shaded sunbeds one can sink into, and a covered seating area. This cozy corner is the perfect space from which to enjoy an aromatic coffee courtesy of the in-room espresso machine, and refresh yourself.

IN-ROOM SERVICES AND AMENITIES

ROOM FEATURES

- Room size: 60 m2 (excluding balcony)
- Accommodates 2 adults and 2 children
- Patio garden with private plunge pool, umbrella and two sunbeds
- Spacious living area
- Fully stocked mini bar (extra charge)
- Espresso machine (replenished daily)
- Coffee and tea making facilities (replenished daily)
- Direct dial telephone with voicemail (3 devices)
- Bedside reading lights
- Automated in-room lighting including mood lighting and night light
- Plugs with USB ports
- Electronic "Do not disturb" function
- Hairdryer
- Dressing table
- Safety deposit box
- Marble or parquet flooring
- Electrically operated curtains

BED AND BATH

- Upper level : King-sized bed
- Ground floor: Sofa bed and a day bed
- Pillow menu available
- Lighted make-up and shaving mirror
- Walk-in shower and WC on the ground floor and clawfoot bathtub with walk-in shower and WC on the upper level
- ESPA toiletries
- Thick terry bathrobes and slippers
- Loofah

ENTERTAINMENT

- Smart TV 50" with satellite channels (2 units) supporting Netflix service subject to client's subscription (TV can be paired with android smartphones and tablets)

INTERNET ACCESS

- Wireless Internet access (with compliments)

SERVICES AND AMENITIES

- Private check-in
- Daily housekeeping service
- Daily Turning Down service (Night Service)
- Airport transfers and limousine service (on request)
- Babysitting service (on request)
- Currency exchange service
- 24-hour room service
- Multilingual concierge
- Valet parking
- Complimentary access to PressReader application (International newspapers and magazines)
- Laundry, dry cleaning and pressing
- Exclusive access to adults only Sunken Royal Pool (available to guests 16 years and older)

GUEST COURTESIES

- Cold towel upon check-in
- Complimentary welcome drink upon arrival
- Sweets display, mineral water, bottle of house wine and pralines upon arrival
- Fresh fruit display replenished daily
- Bottle of almond liqueur
- Daily sweets courtesy

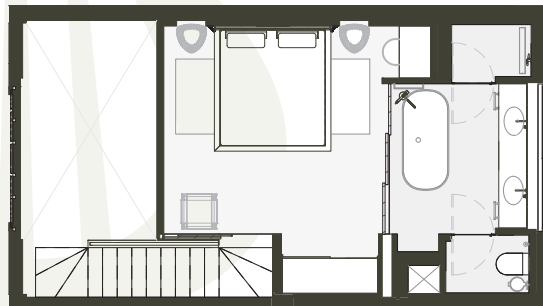
ELYSIUM

FLOORPLAN

Garden Villa Suite, Private Pool



lower level



upper level

E L Y S I U M

ACCOMMODATION

The Artemis Junior Suite

The ancient Greek goddess of the hunt and nature, Artemis, lends her name to this chic and contemporary suite: a fitting moniker, given its earthy tone, golden hue, and rose tint embellishments interwoven throughout its décor.

Modest elegance defines the space of the living room, which features an inviting sofa suite, vanity station and smart TV, along with an espresso machine. Overlooked by a statement sky blue wall, the Artemis Suite affords couples a unique base from which to immerse themselves in the island's history and culture.

An imposing wood-panelled framed opening leads into the bedroom, adorned with a double bed, second smart TV, and desk space with computer.

With warm chestnut parquet flooring throughout, and a tasteful marble bathroom, guests will not be left wanting in terms of comfort and convenience.

Thanks to its elevated position, couples seeking a romantic setting from which to celebrate their union will delight in the Artemis Suite's spacious balcony, affording a view of Paphos rolling landscape, the always inspiring Mediterranean Sea, and grand palatial retreat that is the Elysium's grounds: toast the marvellous colours of the sunset with a glass of champagne in the creation of lasting holiday memories!

IN-ROOM SERVICES AND AMENITIES

ROOM FEATURES

- Room size: 66 m2 (excluding balcony)
- Located on the 3rd floor
- View of the sea
- Accommodates up to 2 adults (over 16 years old)
- Private balcony
- Direct dial telephone with voicemail (3 devices)
- Double glazed windows
- Safety deposit box
- Fully stocked mini bar (extra charge)
- Espresso machine (replenished daily)
- Coffee and tea making facilities (replenished daily)
- Double wardrobe with lit hanging rails
- Dressing table
- Hairdryer
- Parquet flooring

BED AND BATH

- Bed type: King-sized bed
- Pillow menu available
- Lighted make-up and shaving mirror
- Marble bathroom with bathtub, hand shower, WC, and bidet
- ESPA toiletries

ENTERTAINMENT

- Smart TV 50" with satellite channels (2 units) supporting Netflix service subject to client's subscription (TV can be paired with android smartphones and tablets)

INTERNET ACCESS

- Wireless Internet access (with compliments)

SERVICES AND AMENITIES

- Private check-in
- Daily housekeeping service
- Daily Turning Down service (Night Service)
- Airport transfers and limousine service (on request)
- Babysitting service (on request)
- Currency exchange service
- 24-hour room service
- Multilingual concierge
- Valet parking
- Complimentary access to PressReader application (International newspapers and magazines)
- Laundry, dry cleaning and pressing
- Exclusive access to adults only Sunken Royal Pool (available to guests 16 years and older)

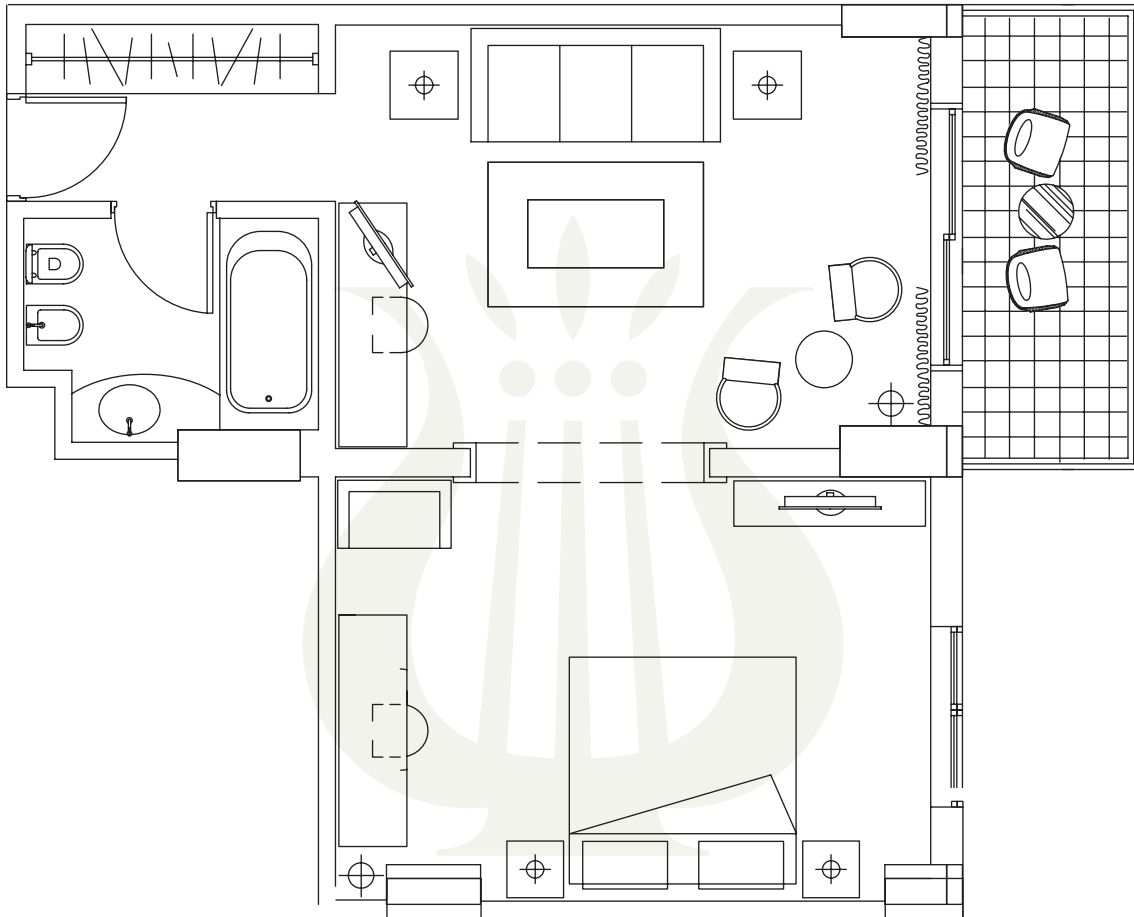
GUEST COURTESIES

- Cold towel upon check-in
- Complimentary welcome drink upon arrival
- Sweets display, mineral water, bottle of house wine and pralines upon arrival
- Fresh fruit display replenished daily
- Bottle of almond liqueur
- Daily sweets courtesy

E L Y S I U M

FLOORPLAN

The Artemis Junior Suite



E L Y S I U M

ACCOMMODATION

The Thalia Suite

A daughter of Zeus and Mnemosyne, ancient Greek mythology tells that Thalia (meaning 'to blossom') was one of the nine Muses – inspirational goddesses of literature, science, and the arts – and presided over idyllic poetry.

And, true to its name, the Elysium's Thalia Suite is abounding with peaceful, pastoral nuances, from its rich chocolate parquet flooring and handcrafted wooden wall panelling, to its hard and soft furnishings featuring floral motifs.

Teal and cherry intertwine with flaxen hues in creating a sophisticated and serene living room space, composed of a sofa suite, espresso machine, and smart TV overlooked by an elegant recessed ceiling.

IN-ROOM SERVICES AND AMENITIES

ROOM FEATURES

- Room size: 67 m2 (excluding balcony)
- Located on the 4th floor
- Accommodates up to 2 adults (over 16 years old)
- Private balcony
- Direct dial telephone with voicemail (3 devices)
- Double glazed windows
- Safety deposit box
- Fully stocked mini bar (extra charge)
- Espresso machine (replenished daily)
- Coffee and tea making facilities (replenished daily)
- Double wardrobe with lit hanging rails
- Dressing table
- Hairdryer
- Parquet flooring

BED AND BATH

- Bed type: King-sized bed
- Pillow menu available
- Lighted make-up and shaving mirror
- Marble bathroom with large Jacuzzi bathtub, hand shower, WC, bidet, and walk-in shower
- ESPA toiletries
- Thick terry bathrobes and slippers
- Loofah

The separate bedroom is refinement incarnate, with an inviting double bed, chic seating area, second television, and computer. The en-suite bathroom – featuring a double sink, bathtub and Jacuzzi, and separate shower stall – is reachable via the bedroom's walk-in wardrobe, affording a plethora of space, and graceful place from which guests may prepare for a night out, thanks to its dedicated vanity station.

With a balcony overlooking the bright blue of the sea and genial green of the island and resort's landscapes, couples will delight in enjoying an aromatic coffee whilst breathing in the fresh, revitalising morning air: holiday perfection.

ENTERTAINMENT

- Smart TV 50" with satellite channels (2 units) supporting Netflix service subject to client's subscription (TV can be paired with android smartphones and tablets)

INTERNET ACCESS

- Wireless Internet access (with compliments)

SERVICES AND AMENITIES

- Private check-in
- Daily housekeeping service
- Daily Turning Down service (Night Service)
- Airport transfers and limousine service (on request)
- Babysitting service (on request)
- Currency exchange service
- 24-hour room service
- Multilingual concierge
- Valet parking
- Complimentary access to PressReader application (International newspapers and magazines)
- Laundry, dry cleaning and pressing
- Exclusive access to adults only Sunken Royal Pool (available to guests 16 years and older)

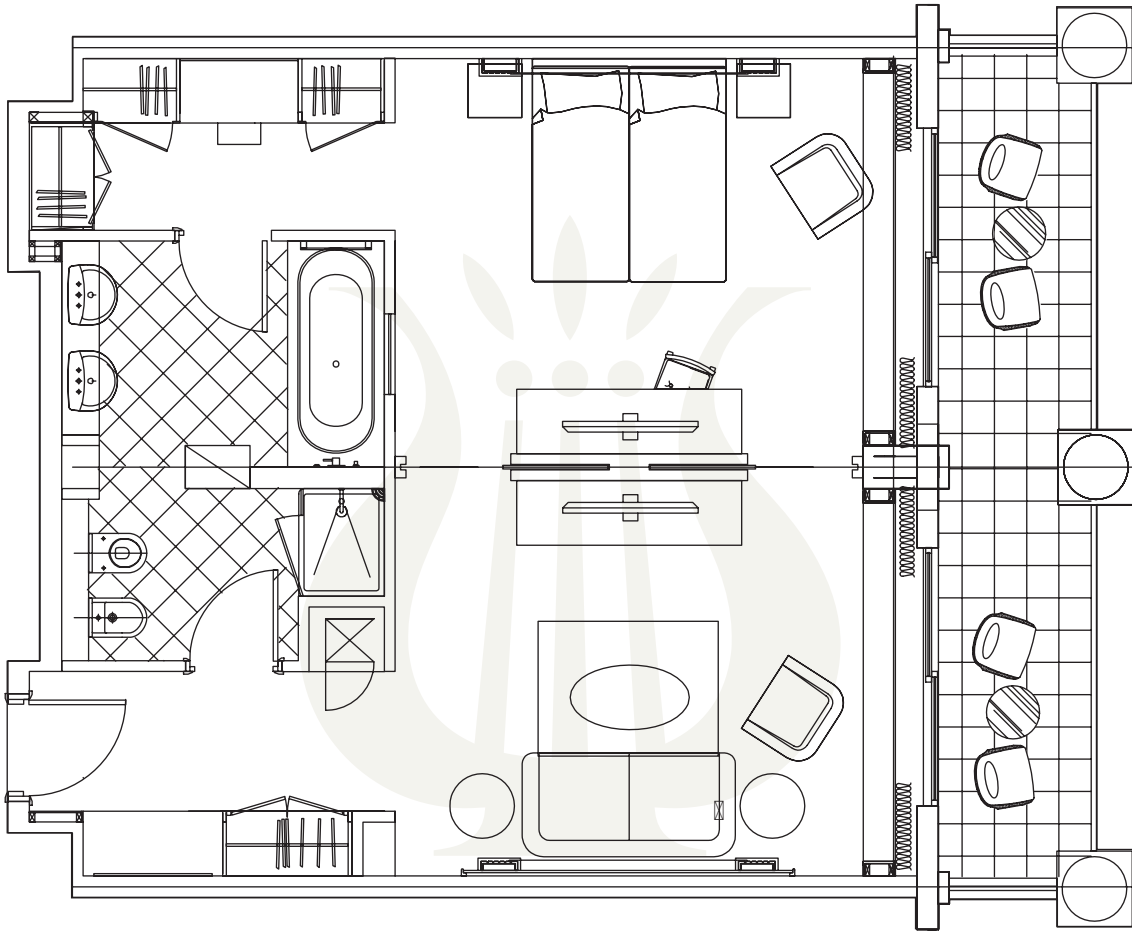
GUEST COURTESIES

- Cold towel upon check-in
- Complimentary welcome drink upon arrival
- Sweets display, mineral water, bottle of house wine and pralines upon arrival
- Fresh fruit display replenished daily
- Bottle of almond liqueur
- Daily sweets courtesy

E L Y S I U M

FLOORPLAN

The Thalia Suite



E L Y S I U M

ACCOMMODATION

The Queen Verenikis Suite

Adorned with soft sand tones, ruby accents, and golden hues, our Queen Verenikis Suite fully embodies its stately title.

With a pastoral vine patterned carpet blanketing the area, the Queen Verenikis living room makes for a comfortable and cosy space, enhanced by elegant wooden furnishings, vintage candelabras, and artfully lit etched wooden-framed paintings featuring classical Greek motifs.

Further to a chic sofa suite, coffee table, and private bar with espresso machine, the suite's living area is also home to a smart TV, and computer.

Entering the separate bedroom, the eye is drawn to the classic recessed ceiling, inviting four-poster bed, and soft lighting. Whilst a separate cloakroom offshoots the foyer upon entering the suite for convenience, guests may anticipate indulging in the gloriously expansive, terracotta-hued en-suite bathroom, complete with bathtub and Jacuzzi, separate walk-in shower, heated towel rail, and double sink.

Of course, perhaps the most alluring aspect of the Queen Verenikis Suite is its sweeping balcony, affording awe-inspiring views of the azure Mediterranean Sea, lush landscaped gardens, and intricate network of pools in the hotel's grounds: a unique view that, when paired with a private dinner for two under the stars of the night's sky, makes for a picture perfect holiday moment forever inscribed in memory.

IN-ROOM SERVICES AND AMENITIES

ROOM FEATURES

- Room size: 86 m2 (excluding balcony)
- Located on the 2nd floor
- Accommodates up to 2 adults (over 16 years old)
- View of the sea
- Separate living room and bedroom
- Private balcony
- Direct dial telephone with voicemail (3 devices)
- Double glazed windows
- Safety deposit box
- Fully stocked mini bar
- Espresso machine (replenished daily)
- Coffee and tea making facilities (replenished daily)
- Double wardrobe with lit hanging rails
- Dressing table
- Hairdryer
- Carpet flooring

BED AND BATH

- Bed type: King-sized bed
- Pillow menu available
- Lighted make-up and shaving mirror
- Marble bathroom with large Jacuzzi bathtub, hand shower, WC, bidet, and walk-in shower
- ESPA toiletries
- Thick terry bathrobes and slippers
- Loofah

ENTERTAINMENT

- Smart TV 50" with satellite channels (2 units) supporting Netflix service subject to client's subscription (TV can be paired with android smartphones and tablets)

INTERNET ACCESS

- Wireless Internet access (with compliments)

SERVICES AND AMENITIES

- Private check-in
- Daily housekeeping service
- Daily Turning Down service (Night Service)
- Airport transfers and limousine service (on request)
- Babysitting service (on request)
- Currency exchange service
- 24-hour room service
- Multilingual concierge
- Valet parking
- Complimentary access to PressReader application (International newspapers and magazines)
- Laundry, dry cleaning and pressing
- Exclusive access to adults only Sunken Royal Pool (available to guests 16 years and older)

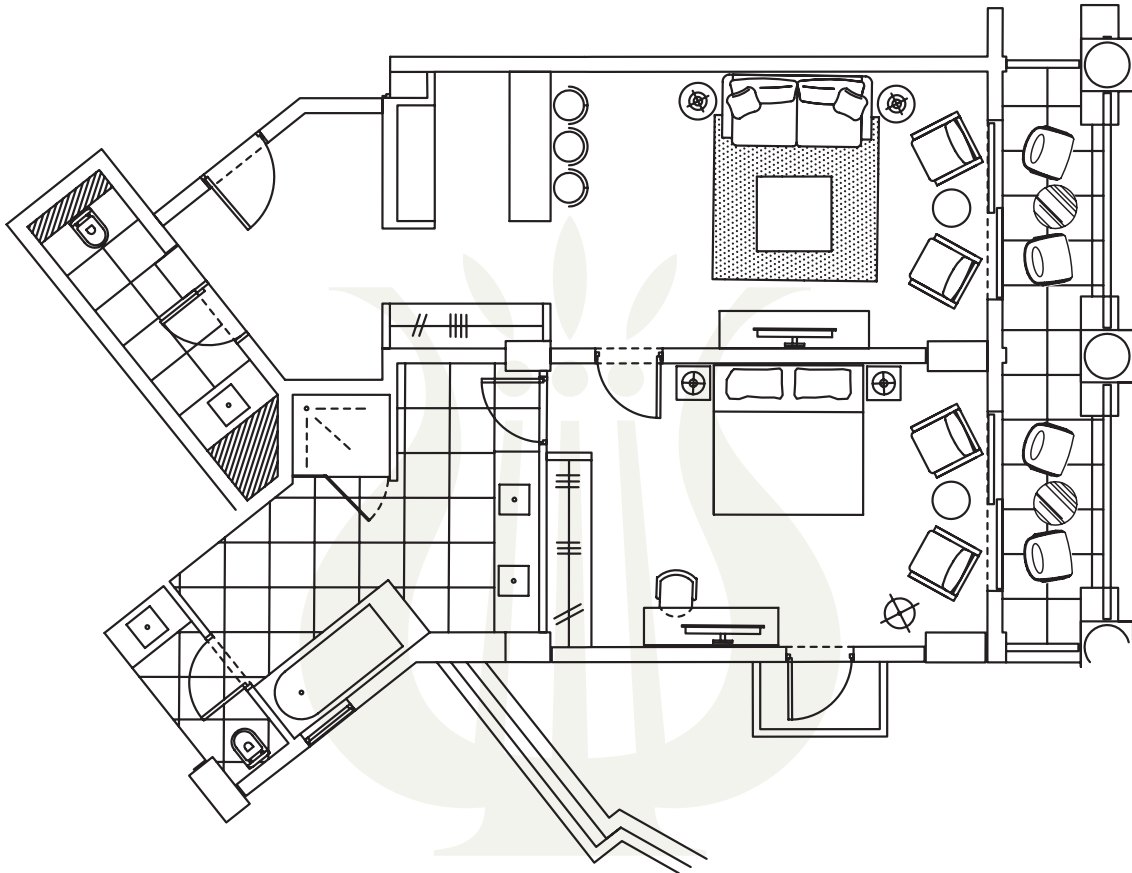
GUEST COURTESIES

- Cold towel upon check-in
- Complimentary welcome drink upon arrival
- Mineral water upon arrival
- French champagne with canapes and pralines upon arrival
- Fresh fruit display replenished daily
- Open bar with alcoholic beverages (with the compliments of the Hotel Management)
- Daily sweets courtesy

E L Y S I U M

FLOORPLAN

The Queen Verenikis Suite



E L Y S I U M

ACCOMMODATION

The Royal Suite, Sea View, Private Pool

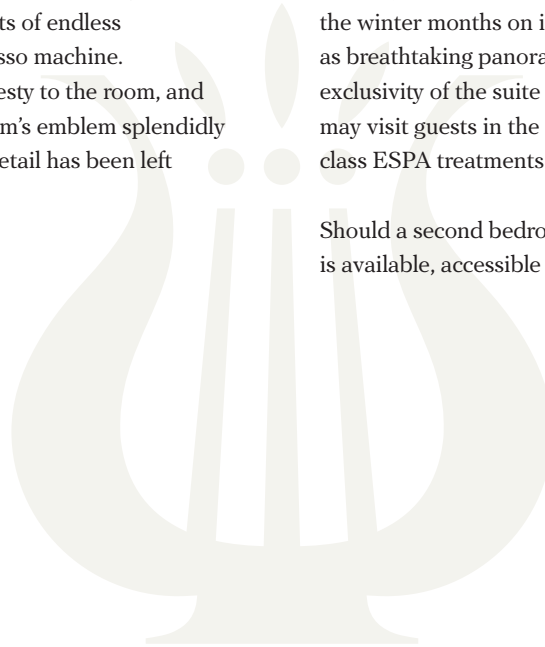
Decadent and dignified, the Elysium's stellar Royal Suite is possessing of an unmistakable old-world charisma, befitting of its regal name. Timeless and classic, the Royal Suite has been designed with the discerning traveller in mind, desiring of an expansive, exclusive, and exalted space from which to renew and revitalise.

Upon stepping into the stately foyer, guests will feel the burdens of everyday life disappear, as they discover their new palatial home. Peaceful blues, grand greens, and appealing apricot hues decorate the spacious conjoined living area and dining room, complete with an elegant sofa suite, large screen TV, guest cloakroom, tasteful dining table for nights of endless entertaining, and private bar with espresso machine. From grand artwork lending a royal majesty to the room, and exquisite recessed ceilings, to the Elysium's emblem splendidly embossed in the wooden furniture, no detail has been left unattended to.

Indeed, such precision and uncompromising style permeates throughout, with the separate bedroom featuring an exquisitely carved four-poster bed, walk-in wardrobe, and lavish bathroom, composed of a bathtub and Jacuzzi, separate shower stall, heated towel rail, and double sink amid elegant emerald-toned tiling.

For those who aren't afforded the luxury of leaving their business affairs back home during their travels, the Royal Suite features a standalone office, with computer, sofa suite, and separate shower room, providing both comfort and convenience. The Royal Suite also boasts a private pool that is heated during the winter months on its expansive wrap-around terrace, as well as breathtaking panoramic views of the azure sea. Such is the exclusivity of the suite that our specially trained spa therapists may visit guests in the comfort of their suite in delivering world-class ESPA treatments.

Should a second bedroom be required, an interconnecting room is available, accessible via the office.



E L Y S I U M

IN-ROOM SERVICES AND AMENITIES

The Royal Suite, Sea View, Private Pool

ROOM FEATURES

- Room size:
One bedroom: 128 m2 (excluding balcony); accommodates up to 2 persons
Two bedrooms: 162 m2 (excluding balcony); accommodates up to 5 persons
- Panoramic view of sea
- Located on the 1st floor
- Separate living room and bedroom
- Private plunge pool on terrace (heated during winter)
- Direct dial telephone with voicemail (3 devices)
- Double glazed windows
- Safety deposit box
- Fully stocked mini bar with Espresso machine (replenished daily)
- In-room fan coil heating and cooling unit
- Double wardrobe with lit hanging rails
- Dressing table
- Hairdryer
- Marble flooring and carpet
- Fully equipped office with PC, scanner and printer

BED AND BATH

- Bed type: Twin, Double or King-sized bed
- Pillow menu available
- Lighted make-up and shaving mirror
- Marble bathroom with bathtub, hand shower, walk-in shower, Jacuzzi, WC, and bidet
- ESPA toiletries
- Children amenities
- Thick terry bathrobes and slippers
- Children bathrobes and slippers
- Loofah

ENTERTAINMENT

- Smart TV 50" with satellite channels (2 units) supporting Netflix service subject to client's subscription (TV can be paired with android smartphones and tablets)
- 20" all-in-one touchscreen desktop with Beats Audio

INTERNET ACCESS

- Wireless Internet access (with compliments)

SERVICES AND AMENITIES

- Private check-in
- Daily housekeeping service
- Daily Turning Down service (Night Service)
- Airport transfers and limousine service (on request)
- Babysitting service (on request)
- Currency exchange service
- 24-hour room service
- Multilingual concierge
- Valet parking
- Complimentary access to PressReader application (International newspapers and magazines)
- Laundry and dry cleaning
- Exclusive access to adults only Sunken Royal Pool (available to guests 16 years and older)

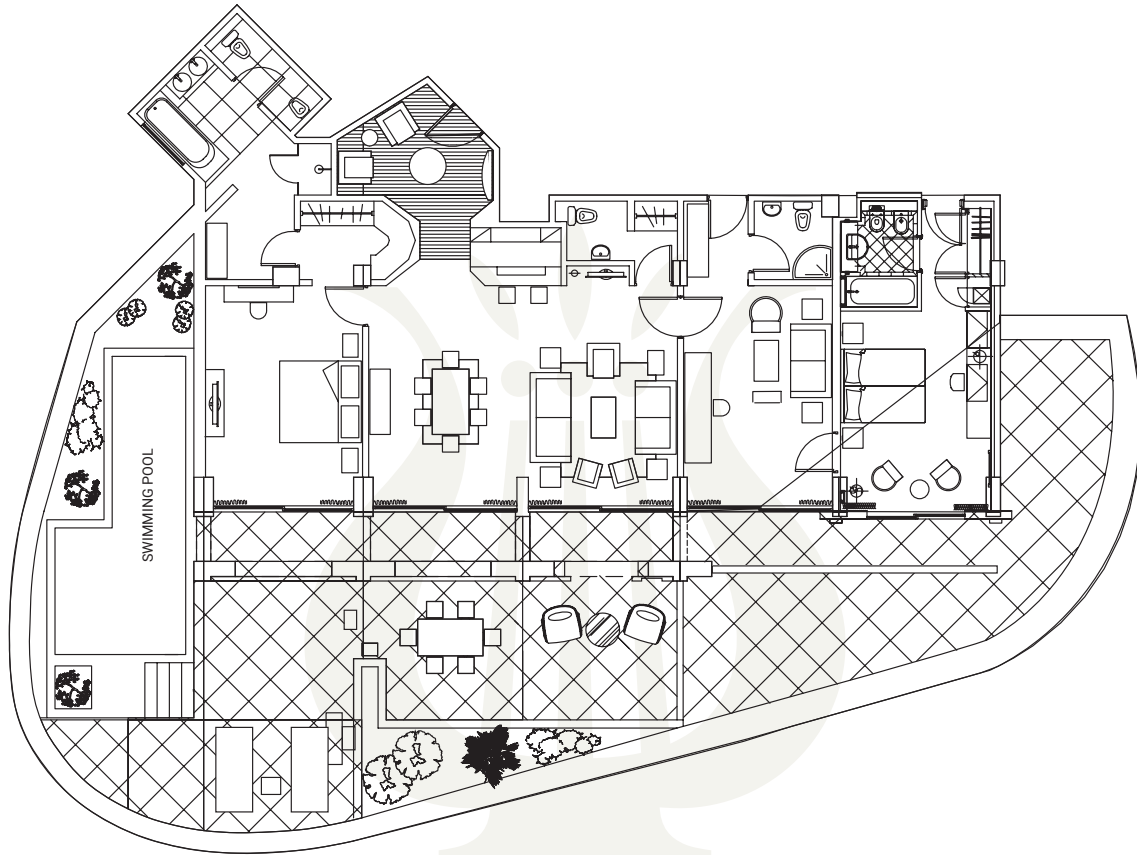
GUEST COURTESIES

- Cold towel upon check-in
- Complimentary welcome drink upon arrival
- Mineral water upon arrival
- French champagne with canapes and pralines upon arrival
- Fresh fruit display replenished daily
- Open bar with alcoholic beverages (with the compliments of the Hotel Management)
- Daily sweets courtesy

E L Y S I U M

FLOORPLAN

The Royal Suite, Sea View, Private Pool



E L Y S I U M

HOTEL INFORMATION

Our Restaurants

Dining

Dining is a key element of the Elysium experience. Five gourmet restaurants showcase a variety of cuisines, including Italian, Pan - Asian, and Cypriot. Each restaurant reflects our Executive Chef's passion for farm-to-table dining, with local ingredients used daily in bringing his culinary creations to life.

RISTORANTE BACCO

Ristorante Bacco offers guests a complete dining experience: a delicious meal in a warm and intimate setting. Authentic Italian cuisine – with highlights from Tuscany – is captured in a sumptuous menu that includes homemade pasta dishes, tender meat and fish specialties, and the most popular Italian desserts, all based on original recipes and made from fresh ingredients. Allow us to recommend a matching Italian wine, or come to the glass-fronted storage cellar to taste and choose a wine for yourself. Whether you prefer a table indoors or in the sunken courtyard outside, sit back and enjoy the unique gastronomic experience that Bacco offers.

MEDITERRANEO RESTAURANT

(May-Oct - weather permitted)

Mere steps away from the sea, the open-air Mediterraneo Restaurant serves a delicious array of Cypriot and Mediterranean specialities. An open kitchen and wooden furniture enhance this inviting restaurant's ambience, which combines traditional décor with a touch of class. Mediterraneo is open daily for lunch and dinner. No visitor should leave the island without tasting Mediterraneo's delights, which include local favourites, including fresh fish, pasta, refreshing salads, and a great variety of indulgent snacks.

EPICUREAN RESTAURANT

Epicurean's creative flair and superior service ensure that a mere meal metamorphoses into an unforgettable occasion. Nestled at the end of a grand Venetian corridor framed by palatial arches, Epicurean's exquisite space is accented with harmonious olive green tones, and unique Murano glass chandeliers.

Diners are invited to indulge in a rich buffet presenting different international cuisines nightly, with live cooking stations serving to further inspire diners' senses. Between the months of May and October, Epicurean's expansive chic French doors open up onto the eatery's terrace framed by lush greenery and string lights affording guests the luxury of al fresco dining: a simply spectacular setting

LEMONIA PIAZZA

With its bright and cheerful décor, it is no wonder that Lemonia Piazza has made a name for itself for delivering one of the most indulgent breakfast experiences island-wide. A brilliant display of breakfast goods – spanning freshly baked pastries and breads, charcuteries and cheeses, and hot delights – as well as à la minute cooking stations tempt guests on a daily basis. Coffees, teas, and fresh juices serve as the ideal accompaniments, alongside champagne: because the start of every day should be celebrated as a special occasion!

Whether seated inside, or outside on the terrace, diners can also anticipate availing themselves of our à la carte lunch and dinner menu, whilst our younger guests can expect to be delighted by our dedicated children's menu.

O' SHIN RESTAURANT

Dignified and yet simplistic, O'Shin's intimate space gives guests the opportunity to explore a selection of refined, pan-Asian gastronomic delights. Fawn-coloured oak wood utilised throughout the eatery lends to its elegant setting, which has been further embellished with oriental-styled latticed partitions, and soft, cherry-hued lighting.

Whilst hot dishes – a diverse range of starters and mains are prepared behind the scenes, the variety of sushi, sashimi, and maki is brought to life at the dedicated sushi counter, establishing an exciting dialogue between diner and chef. In completing their Asian journey, guests can anticipate enjoying a smooth cup of Sake, or savouring the aromas of O'Shin's selection of teas.

E L Y S I U M

HOTEL INFORMATION

Our Bars

CAFÉ OCCIDENTAL

Chic, contemporary, and cosmopolitan, Café Occidental pulses with energy from dawn until dusk, providing guests with an indulgent all-day menu of gourmet sandwiches and salad delights. The outlet's layout is reminiscent of a Parisian patisserie, complete with an inviting pastry display. Guests can even take a slice of Café Occidental heaven home with them, thanks to our dedicated pastry boxes.

As the sun peaks in the sky, Café Occidental becomes home to one of the most beloved British traditions: afternoon tea. Of course, if desiring of a quiet space to read a book or a newspaper, guests may simply wander into the adjacent library. With the setting sun, delicious cocktails galore begin to emerge from behind the bar: pair with a cheese or charcuterie platter for an unequivocally refined evening.

MARE NOSTRUM POOL BAR

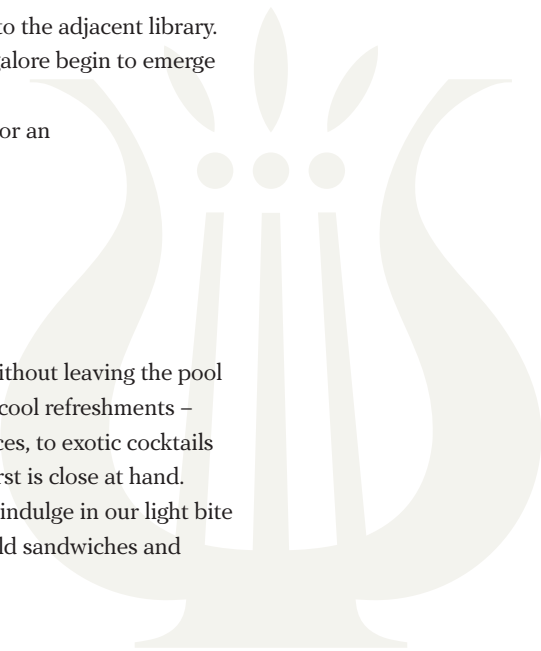
(May-Oct - weather permitted)

Savour sipping on your favourite drink without leaving the pool at Mare Nostrum Pool Bar. A pavilion of cool refreshments – from soft drinks and freshly squeezed juices, to exotic cocktails – whatever you desire to quench your thirst is close at hand. Should you find yourself feeling hungry, indulge in our light bite selection, spanning a variety of pizzas, cold sandwiches and other light snacks.

ASTRIA BAR

Themed around the night sky's glittering constellations, Bar Astria is ideal for enjoying your favourite drinks whilst sharing moments of private conversation with friends and family.

Whether seated indoors or outside beneath the pergola-covered terraces overlooking the Lethe Spring – which is beautifully lit up at night – this is the place to meet and enjoy the offerings of our well-stocked bar, inclusive of a range of cocktails, premium whiskies, and even the right cigar to go with your preferred cognac. Live music performances on most nights of the week ensure an unforgettable evening.



E L Y S I U M

HOTEL INFORMATION

Leisure Facilities

The impressive free-form outdoor pool is the focal point of the hotel's gardens and has a multi-level design, centred around a hydro-massage rotunda pool. If relaxation and pampering are what you have in mind, the Opium Health Spa featuring a variety of ESPA treatments will deliver all you could ever hope for. For the more energetic, scuba diving courses are available, as well as two floodlit tennis courts, a high-tech gym, and aerobics and Pilates studios, all with private instructors. As for the golf enthusiasts 4 Golf Courses are available within 30 minutes from the hotel.

If travelling as a family, feel confident in allowing your children to explore the indoor Angel Kids Club and amusement centre, or to splash around in the shaded children's outdoor pool and a pool with waterslide, adjacent playground, whilst you engage in more mellow pursuits, such as a casual game of chess.

ANGEL'S KIDS CLUB & CRÈCHE

A supervised children's club (3-12 years) operates during the Christmas, New Year, and Easter periods, as well as from April to October (10:00-13:00 & 14:00-17:00). Further to an indoor amusement centre, there is an outdoor, shaded children's pool.

Parents of infants aged 4 to 35 months can engage in exploring the Elysium's surroundings and its facilities whilst feeling at ease in the knowledge that their child is being lovingly tended to by trained professional staff members.

Baby sitting services are available upon request (24- hour notice is required).

High chairs are provided in all restaurants, with children's menus available in Lemonia Piazza, Mediterraneo Restaurant, Epicurean Restaurant and Ristorante Bacco.

HOTEL SHOPS

A number of hotel shops are available to guests, including a souvenir shop, a boutique, a jewellery shop, a hairdressing salon, a perfumery, which is home to some of the most exclusive, world-renowned brands, including Amouage, Puredistance Master Perfumes, Xerjoff, Maison Francis Kurkdjian, and Editions De Parfums Frederic Malle, amongst others.

CHILD CARE ITEMS

The hotel provides baby and childcare items and services that can be pre-ordered, which include – but are not limited to – the following:

- High chairs
- Buggies
- Sterilizers
- Bottle warmers
- Baby bathtubs
- Special dietary needs

GUEST SERVICES

A whole series of guest services ensures that your stay at the Elysium is as comfortable as possible.

Services include:

- 24-hour room service and early breakfast service
- Laundry and valet
- Foreign exchange
- Gift shop, boutique, a jewelry shop and a perfumery
- Car rental, taxi and limousines
- Golf bookings
- Bicycle rental
- Local excursions and cruises
- Luggage weighing service and delivery to the room
- Supervised luggage Storage service
- Luggage room delivery service
- Wireless Internet access (with hotel's compliments)
- Concierge Service/Guest Services
- Doorman Service

RECREATIONAL FACILITIES

- Multi-level pools with hydro-massage
- Royal Pool in sunken courtyard
- Two floodlit tennis courts
- Amusement centre
- Multimedia room
- The Orpheus amphitheatre with views of the sea, sunset and floor chess
- A chapel for weddings
- Library
- The Opium Health Spa Hair & beauty salon
- High-tech gym
- Aerobics and Pilates studio and classes with private instructors
- Sauna
- Steam room
- Indoor pool (heated in winter)
- Projection screen for live events and shows on 177" HD screen

E L Y S I U M

NOMINATIONS & AWARDS

“And the nominee for best leisure hotel is... the Elysium, Paphos!”

The Elysium has received a number of enviable accolades over the years.

In 2002, the UK’s Sunday Times voted the Elysium the ‘Best New Resort Hotel in the World’. Since then, the hotel has proudly accepted a plethora of prestigious awards, acknowledging the high standard of services offered.

MOST RECENT AWARDS

from 2020 onwards

- TRIP ADVISOR

Traveller’s Choice

“Best of the Best” for 2023

Travellers Choice

2024, 2022, 2021, 2020

- CONDE NAST READERS CHOICE AWARD

12th place - Among 30 best resorts in Europe for 2023

17th place - Among 25 best resorts in Europe for 2024

- TUI GLOBAL AWARD

TUI quality hotel

2024, 2023, 2020

- BRITISH AIRWAYS

Excellence award

2023, 2022, 2021

- JET2

Quality award winner

2023, 2022, 2020

- BOOKING.COM

Traveller Review awards

2023, 2020

- FIT REISEN

Wellbeing award

2024, 2023, 2022, 2021, 2020

- FIT REISEN

Health & wellness award

2022, 2021, 2020

- HOTELS.COM

Most wanted award

9.4/10

2021, 2020

- EXPEDIA

Top Room Nights Production in 2021

